

SINGLE 4" COLUMN

AIR COOLED

SPINSTOP™ (air cooled) includes: Standard U.S. faucet with brass body & shank with 5 ft x 3/16" I.D. vinyl hose.

PART NO.	FAUCETS	FINISH	OUTLET	DISPENSE SYSTEM
DS-243-PVD	3	PVD brass	Hose	SPINSTOP™ (Air Cooled)
DS-143-PSS	3	Polished SS	Hose	SPINSTOP™ (Air Cooled)
DS-244-PVD	4	PVD brass	Hose	SPINSTOP™ (Air Cooled)
DS-144-PSS	4	Polished SS	Hose	SPINSTOP™ (Air Cooled)

KOOL-RITE™ (GLYCOL)

Kool-Rite™ (glycol cooled) includes: 304 stainless steel faucet & shank with 1/4" O.D. tube.

PART NO.	FAUCETS	FINISH	OUTLET	RESTRICTION	DISPENSE SYSTEM
DS-243-PVDKR	3	PVD brass	Tube	7 1/2 lbs	Kool-Rite™ (Glycol)
DS-143-PSSKR	3	Polished SS	Tube	7 1/2 lbs	Kool-Rite™ (Glycol)
DS-244-PVDKR	4	PVD brass	Tube	7 1/2 lbs	Kool-Rite™ (Glycol)
DS-144-PSSKR	4	Polished SS	Tube	7 1/2 lbs	Kool-Rite™ (Glycol)



DS-144-PSS



DS-244-PVD

DS-243-PVD

DRIP TRAY SELECTIONS

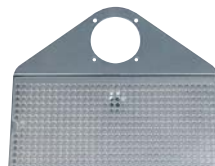
PART NO.	FAUCETS	SERIES TYPE	FINISH	DIMENSIONS
DP-420LD	3	Bevel edge	SS	16"L x 6-1/2"W
DP-420LDSSPVD	3	Bevel edge	PVD with SS	16"L x 6-1/2"W
DP-120D	3	Surface mount	SS	12"W x 5"D x 3/4"H
DP-120DSSPVD	3	Surface mount	PVD with SS	12"W x 5"D x 3/4"H
DP-1020D	3 - 4	With cutout	SS	14"W x 8"D x 3/4"H
DP-1020DSSPVD	3 - 4	With cutout	PVD with SS	14"W x 8"D x 3/4"H
DP-220D	3	Flush mount	SS	1/2" flange, 12"W x 5"D x 3/4"H
DP-220DSSPVD	3	Flush mount	PVD with SS	1/2" flange, 12"W x 5"D x 3/4"H
DP-740DSSPVD	3	Wrap around	PVD with SS	16-5/8" x 8-1/4" with 6" back plate
DP-740DP	3	Wrap around	Polished SS	16-5/8" x 8-1/4" with 6" back plate
DP-1604	3 - 4	Rinser	Polished SS	15-3/4"L x 15-3/4"W



DP-1020DSSPVD



DP-1604



DP-740DP



DP-420LD

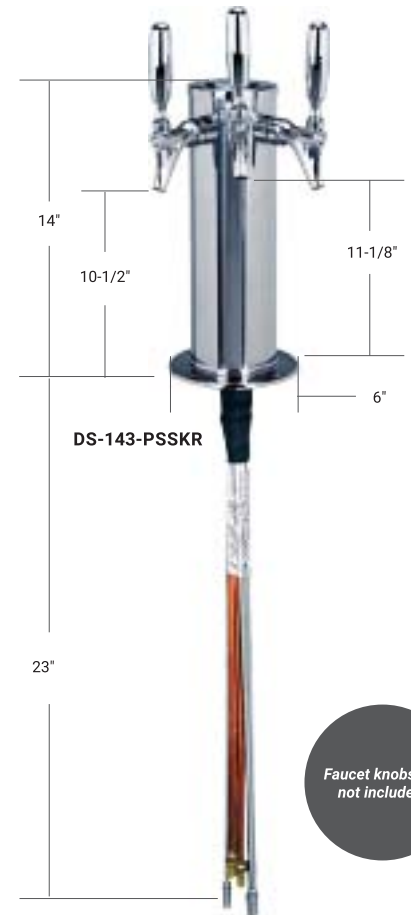
*Perforated Grid Coming Soon



DP-120D



DP-220DSSPVD



DS-143-PSSKR

Faucet knobs are not included.